

INCLUSIVE EDUCATION THROUGH LANGUAGE IN NEPAL



Language-based exclusion is often the first injustice children face in school. If we ignore mother tongues, we quietly tell children their identity does not belong in education.

USE TRANSLANGUAGING

01

Allow students to:

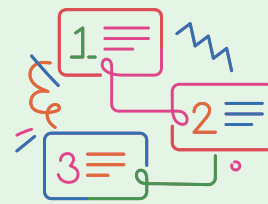
- Discuss in their home language
- Draft ideas in one language and present in another
- Use bilingual glossaries



INTEGRATE UNIVERSAL DESIGN FOR LEARNING (UDL)

02

- Use visuals, audio, and storytelling
- Offer multiple ways to respond
- Reduce reliance on heavy text-only instruction



ENGAGE FAMILIES AS LANGUAGE PARTNERS

03

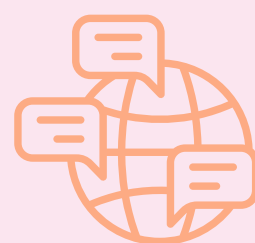
- Encourage storytelling at home
- Invite parents to share cultural narratives
- Send bilingual communication to families



DEVELOP MULTILINGUAL LEARNING MATERIALS

04

- Produce local language storybooks
- Create bilingual posters
- Use community stories in curriculum



USE LINGUISTICALLY RESPONSIVE PEDAGOGY

05

Train teachers to:

- use students' home language
- validate local dialects instead of correcting them publicly



USE PEER LANGUAGE SUPPORT SYSTEMS

06

- Pair students strategically
- Create multilingual learning groups
- Use student interpreters if needed



Inclusive education on the basis of language means redesigning classrooms, assessments, policies, and mindsets.



**INCLUSIVE
EDUCATION**

NEPAL

